

WARON

BY GRS®



JURA

BY GRS®

GRS is proud to introduce the new Jura by GRS line of tools for stone setters and jewelry artists. This is a perfect collaboration between innovation and quality manufacturing.

A world-renowned diamond setter, Jura has made his name with precise setting and unimaginably complex designs. He has faced the challenges unique to stone setting and designed innovative solutions to overcome those challenges. Jura's system is ergonomically conscious for long hours at the bench and creates an environment for maximum efficiency. These tools will revolutionize your workflow.

C O N T E N T S

CLASSIC QUICK CHANGE WORKHOLDING **2**

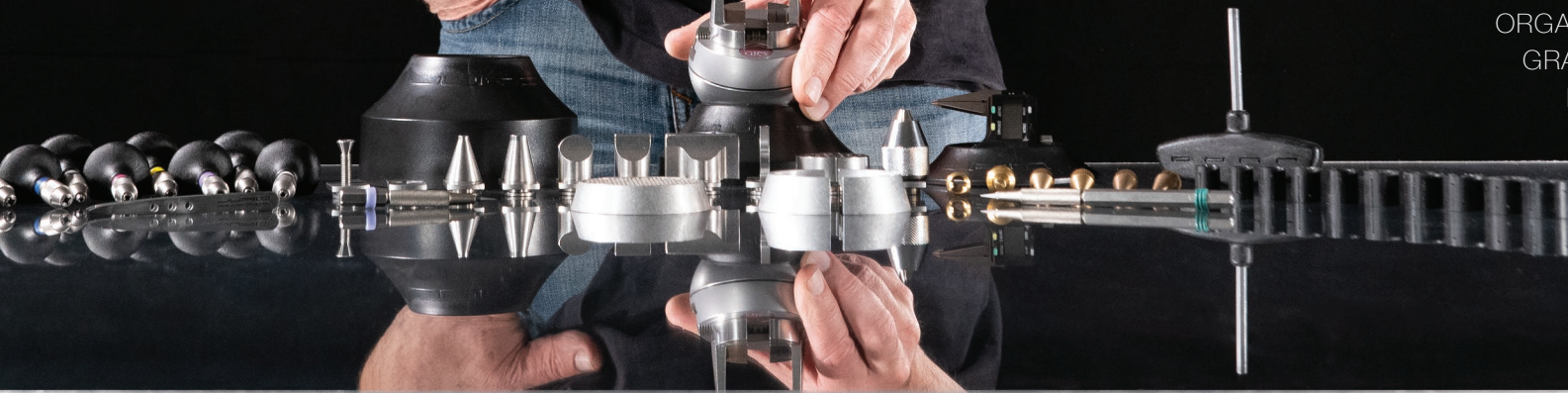
3X WORKHOLDING **12**

MUST HAVES **20**

ORGANIZERS & SMALL GOODS **22**

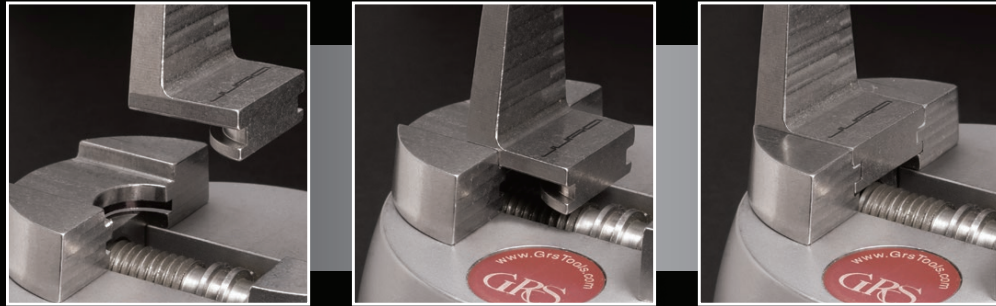
GRAVERS & ACCESSORIES **25**

DEALER DIRECTORY **26**



# CLASSIC QUICK CHANGE WORKHOLDING

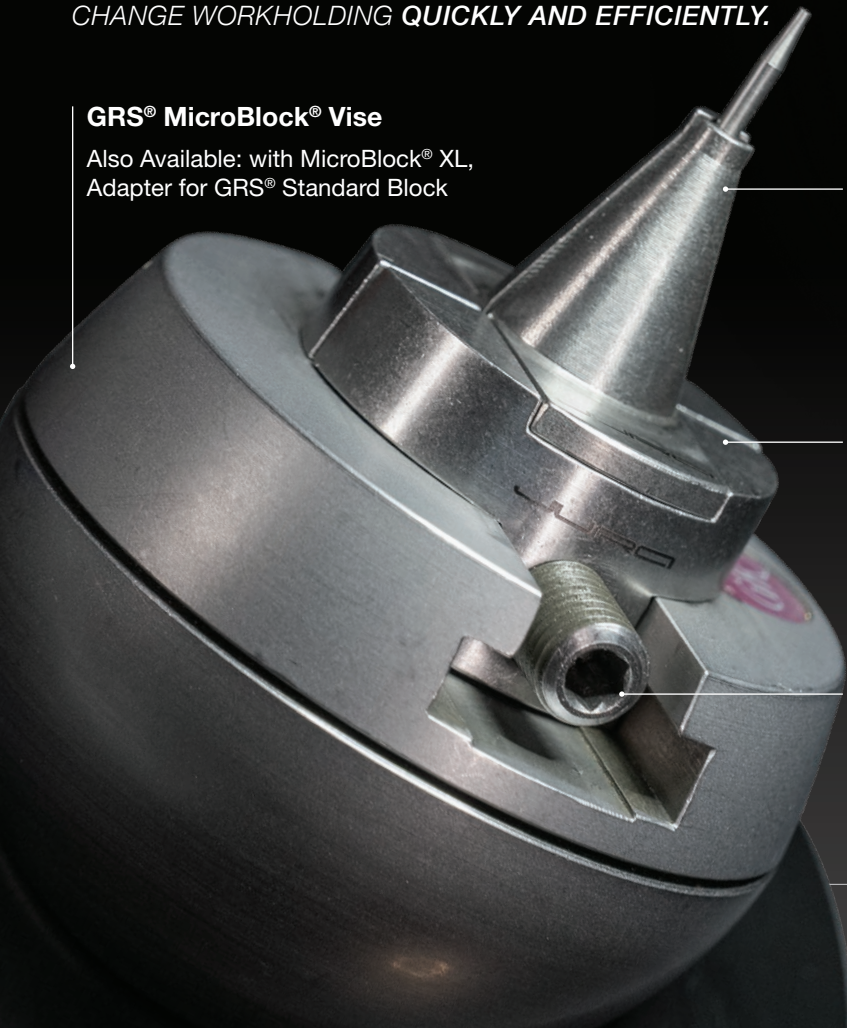
**QC FIXTURE TABS SLIDE EASILY INTO THE MASTER JAWS.**



**CHANGE WORKHOLDING QUICKLY AND EFFICIENTLY.**

## GRS® MicroBlock® Vise

Also Available: with MicroBlock® XL,  
Adapter for GRS® Standard Block



### QC Workholding Fixtures

Shown: 6mm Top with Groove

### Master Jaws

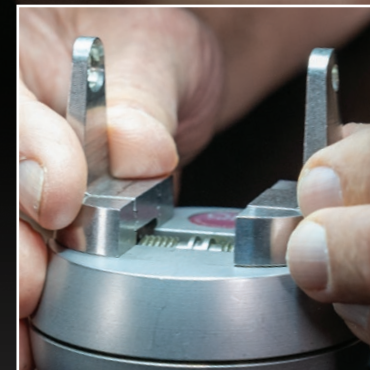
Connect multiple fixtures

### 5 mm Hex Key

Not shown

*"If I can hold it, I can set it."*

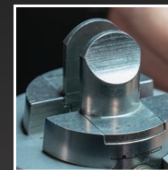
*—Jura*



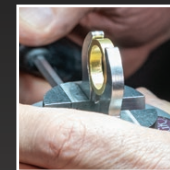
JURA CLAMPS  
for horizontal fixtures



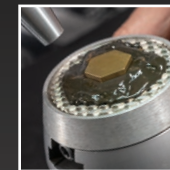
20 MM  
ROUND TOP



OUTSIDE RING  
HOLDER



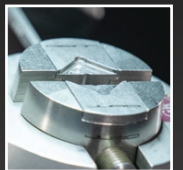
SHELLAC  
PLATE



DRILL HEAD  
HOLDER



FLAT CLAMPS  
WITH GROOVE



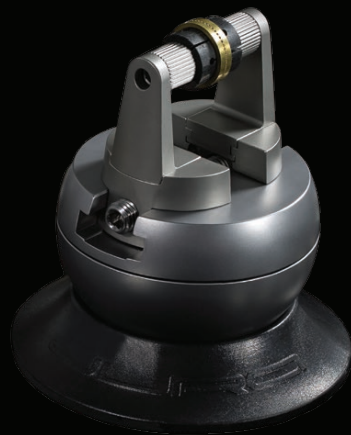


## QC Basic Set With MicroBlock®

500-508

The Basic Set is ideal for artists working with rings. It utilizes the Jura Master Jaws and Quick Change fixtures to create a system that has been designed for ultimate work efficiency. The QC approach allows you to switch fixtures in just seconds. The horizontal ring holder has an independent locking system, allowing separate tension adjustments for the collet and the rotation of the ring. The vertical ring holder is a simple and effective vertical ring solution. Ten expandable collets ensure finding the correct size for your work (Sizes 13–22 mm). A grooved set of flat clamps will hold practice plates and other flat items both square and round. They can also be used for holding beading tools for polishing and sharpening.

*MicroBlock® with Jura Master Jaws, Small Vise Base, 5 mm Hex Key, Organizer, and the following QC Fixtures: Horizontal Inside Ring Holder, Vertical Inside Ring Holder, 10 Plastic Collets, and Flat Clamps with Groove.*



*Also Available:  
Without MicroBlock®*

500-509

### For GRS® Standard Block

500-512

### With MicroBlock® XL

500-526



## QC Complete Set With MicroBlock®

500-510

The Complete Set expands upon the Basic Set and includes an amazing assortment of workholding solutions for any setter. Specialized clamps are ideal for uniquely-shaped projects, including rings, pendants, earrings, bur sharpening, drill making, and beading tool sharpening. Grooved jaws allow you to quickly remove the workpiece and re-sharpen beading tools in one fixture. Each jaw can be customized using Thermo-Loc® for production-style setting. Straight top (20 and 40 mm) fixtures provide access for multi-sided setting. Brass points can be customized to hold a variety of things, including sphere-shaped items. Shellac and Thermo-Loc® cylinders provide support for fragile ring work.

*MicroBlock® with Jura Master Jaws, Small Vise Base, 5 mm Hex Key, Organizer, and the following QC Fixtures: Horizontal Inside Ring Holder, Vertical Inside Ring Holder, 10 Plastic Collets, Flat Clamps with Groove, Outside Ring Holder, 6 mm Cylinder Top with Groove, 10 mm Cylinder Top, 20 mm Round Top, 20 mm Straight Top, 40 mm Straight Top, Engravers Clamps with 2.35 mm Holes, Thermo-Loc® Engravers Clamps, Shellac Plate, Thermo-Loc Cylinder, Shellac Cylinder, Tapered Point Holders, and Tapered Ball Holders.*

*Also Available:  
Without MicroBlock®*

500-511

### For GRS® Standard Block

500-513

### With MicroBlock® XL

500-527





## QC Advanced Set with MicroBlock®

500-517

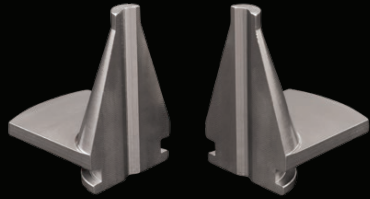
The Advanced Set is the most complete workholding system on the market. Jura has designed workholding solutions for almost any job. This system saves the user from the time and frustration of figuring out how to properly hold a piece for setting or jewelry engraving. In addition to workholding solutions, this set includes a variety of useful accessories. The hand chucks are perfect for use with beading tools, burnishers, bead splitters and more. The digital dividers and ceramic scribe are useful for precision layout. Tweezers and a carbide pick are great accessories that will serve many purposes in your daily work.

*MicroBlock® with Jura Master Jaws, Small Vise Base, 5 mm Hex Key, Organizer, and the following QC Fixtures: Horizontal Inside Ring Holder, Vertical Inside Ring Holder, 10 Plastic Collets, Flat Clamps with Groove, Outside Ring Holder, 6 mm Cylinder Top with Groove, 10 mm Cylinder Top, 20 mm Round Top, 20 mm Straight Top, 40 mm Straight Top, Engravers Clamps with 2.35 mm Holes, Thermo-Loc® Engravers Clamps, Shellac Plate, Thermo-Loc Cylinder, Shellac Cylinder, Tapered Point Holders, Tapered Ball Holders, and Drill Head Holder. It also includes 10 Hand Chucks, Digital Dividers, a Ceramic Scribe, Tweezers, and a Carbide Pick.*



### Vertical Ring Holder & Plastic Collets

Included with all QC Sets, plastic collets sold separately starting on [page 24](#)

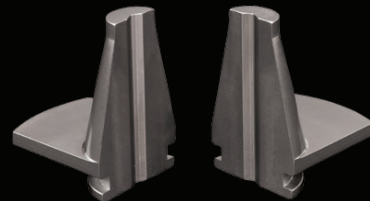


**6 mm Cylinder Top**

500-001

Ideal for making tools, holding small workpieces, and more.

*Fits QC Classic or 3X Vise*

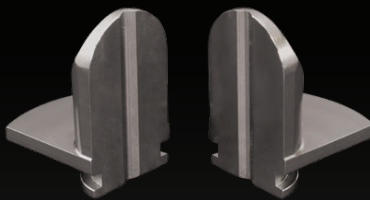


**10 mm Cylinder Top**

500-002

Good for clamping small work pieces such as earrings.

*Fits QC Classic or 3X Vise*

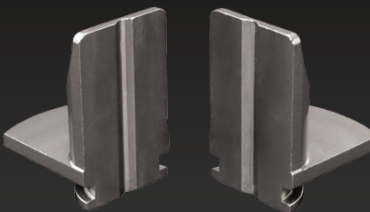


**20 mm Round Top**

500-003

Designed to hold rings, round pendants, and more.

*Fits QC Classic or 3X Vise*

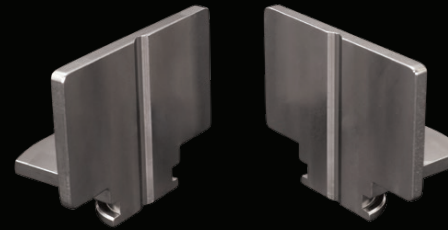


**20 mm Straight Top**

500-004

This mid-sized clamp creates ideal workholding for multi-sided setting.

*Fits QC Classic or 3X Vise*

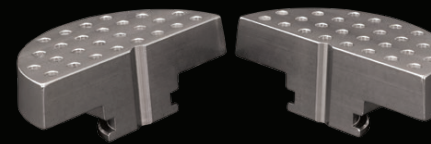


**40 mm Straight Top**

500-005

This wide clamp creates ideal workholding for multi-sided setting.

*Fits QC Classic or 3X Vise*

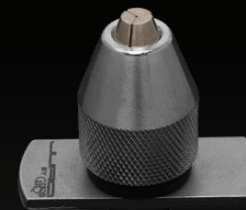


**Engraver's Clamp with 2.35 mm Holes**

500-006

A set of vise jaws made specifically for the QC Master Jaws. This allows the artist to switch quickly back to a traditional set of vise jaws without having to unthread. The pin holes measure 2.35 mm.

*Fits QC Classic or 3X Vise*



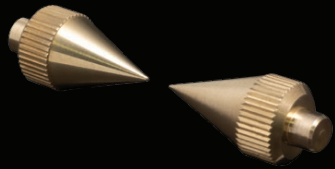
**Drill Head Holder**

500-501

Use this vertical chuck to custom-make tools such as beading tools, drills, and more. Also great for holding work such as earrings.

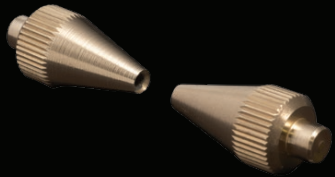
*Fits QC Classic or 3X Vise*





**Tapered Point Holders** 500-506

Easily customized to create precise tension points on your work.  
For use in horizontal ring clamps.



**Tapered Ball Holders** 500-507

Ideal for holding spheres and round-shaped pieces.  
For use in horizontal ring clamps.



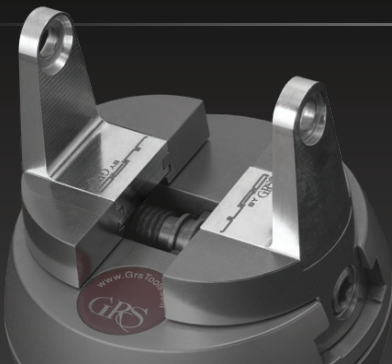
**Shellac Cylinder** 502-015

Use with Shellac to hold rings.  
For use in horizontal ring clamps.



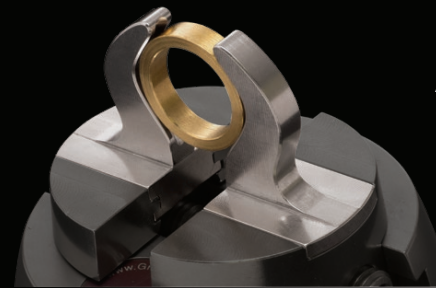
**Thermo-Loc® Cylinder** 502-502

Use with Thermo-Loc to hold rings.  
For use in horizontal ring clamps.



**Horizontal Ring Clamps**

The Horizontal Ring Clamps are a key piece of the Jura Basic Set. It works to hold work horizontally when paired with the Brass Cones, Shellac Cylinder, Thermo-Loc Cylinder, and Inside Ring Holder Screw Set. 500-010



**Outside Ring Holder** 500-009

A simple and efficient ring clamp. Great for focusing on a smaller portion of the piece or small inside ring jobs.

*Fits QC Classic or 3X Vise*



**Inside Ring Holder Screw Set** 500-011

Inside Ring Holder Screw Set uses an independent tension to expand collets while holding rings. It mounts perfectly in the Horizontal Ring Clamps and is included in the Basic Set.



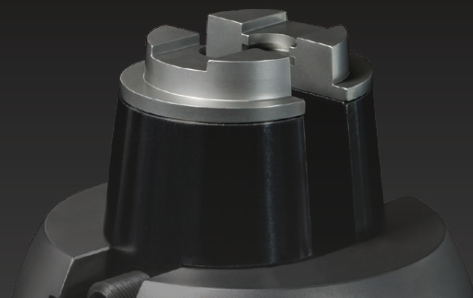
**Thermo-Loc® Engraver's Clamp** 500-013

Use with Thermo-Loc to hold a variety of uniquely-shaped pieces.



**Shellac Plate** 500-014

Use with shellac to hold uniquely-shaped pieces. The unique texture of the fixture helps to secure the shellac while working.

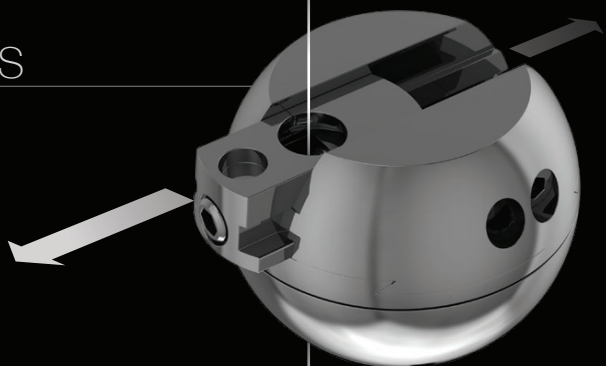


**Adapter for GRS® Standard Block**

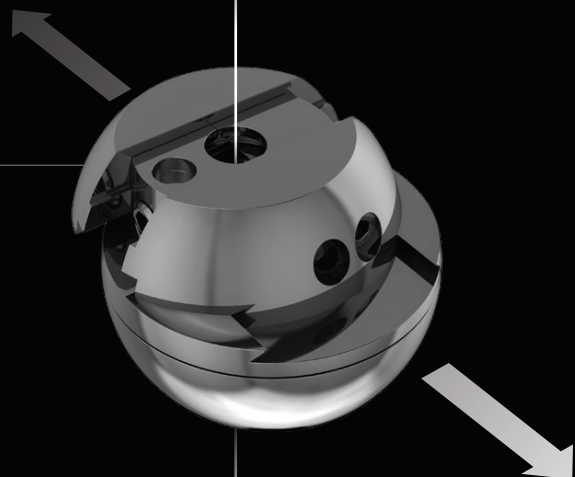
Utilize the entire Jura QC Workholding System in your GRS Standard Block. Quickly drops into the pin holes of your Standard Block. 500-008

# STAY CENTERED

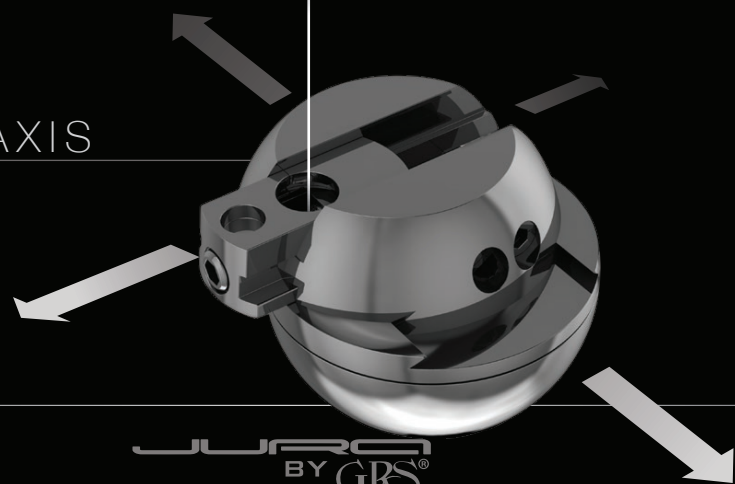
X AXIS



Y AXIS



X+Y AXIS



3X HOLDER ADDS  
THREE AXES



## JURA 3X LINE



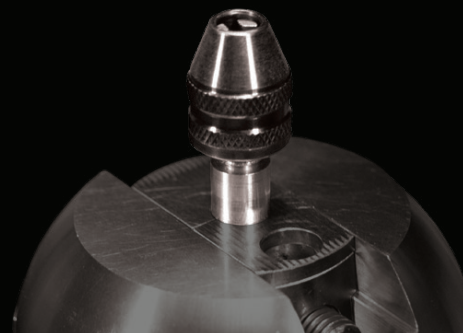


## 3X Starter Set

502-516

The 3X Starter Set is one of the most innovative workholding solutions to hit the jewelry industry. By creating a multi-axis approach, your work will never be out of center again. This system utilizes movement in every direction to ensure unlimited access. For setters using a microscope, this product will save time and frustration. The set comes with the 3X Holder which allows the user to pivot and manipulate the ring to the exact position desired. The orbital ball creates additional versatility, not just for ring holding, but can be used with other attachments in the 3X Line. Robust brass collets will ensure sturdy holding of rings. Jura Stackable Bases will keep work at a proper height depending on the attachment.

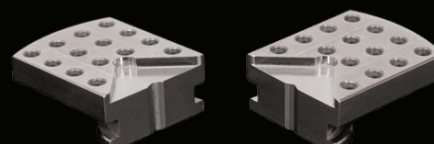
*XY Ball, Set of Jura Stackable Bases, 5 mm Hex Key, 3X Holder, 11 Brass Collets, 10 Plastic Collets, M6 Screw, Radius Divider, Orbital Jaws and Orbital Ball.*



## Mini Chuck

502-505

Remain efficient during the work process with this great little drop-in attachment for making tools or holding work chuck-style.

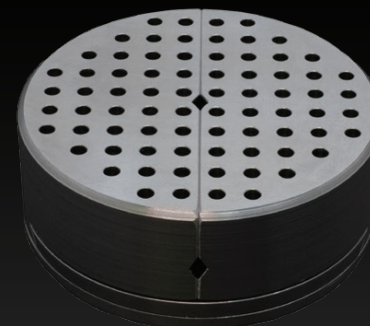


## Flat Clamps with Pin Holes

502-078

This fixture holds flat plates or flat, round pendants. Accommodate larger pieces by placing pins in the holes.

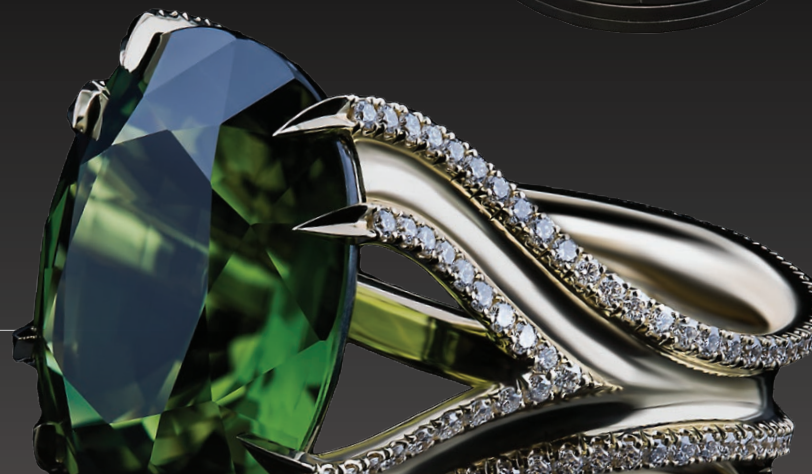
*Fits QC Classic or 3X Vise*

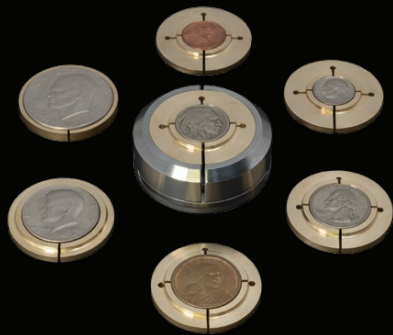


## Pin Vise

502-507

This pin vise was designed to be used with the 3X Orbital Holder (included with the 3X Starter Set). By using the traditional design of a pin vise and adding the orbital approach, the user can clamp their work and keep it in center while also being able to tilt the pin vise.





## Hobo Nickel Holder

502-508



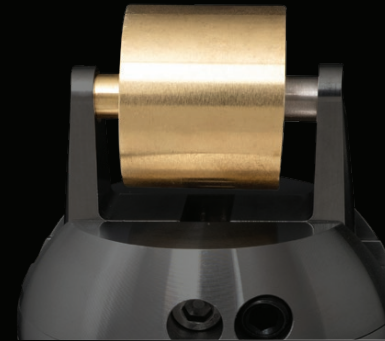
The Hobo Nickel Holder uses a unique brass collet system that has been designed specifically for the most popular coins artists work with. The outer portion of the vise provides a sturdy clamping system to reduce vibration. By attaching the orbital ball to the bottom, the artist gains the ability to tilt the fixture while being able to rotate their vise, keeping the working area centered under the microscope.

*Collets for Penny, Dime, Nickel, Quarter, Dollar, Half Dollar, Eisenhower Dollar*

*Coins not included*

## Watch Bracelet Fixture

523-520

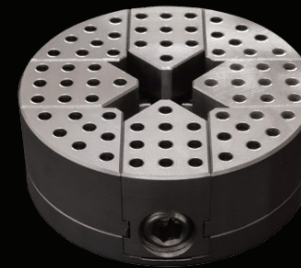


This cylindrical fixture provides a great workholding solution for setting and engraving watch bands. Use with the horizontal ring clamps or the 3X Master Clamps for easy access to your work.

## Thermo-Loc<sup>®</sup> Clamps

502-518

Utilize the 3X System while holding odd-shaped pieces. Designed to help keep Thermo-Loc in place and your work secure.



## 4-Jaw Chuck

502-509

This robust and versatile fixture is the ultimate holding option for uniquely-shaped items. Four independent jaws can be adjusted in a variety of different configurations to hold your work securely.

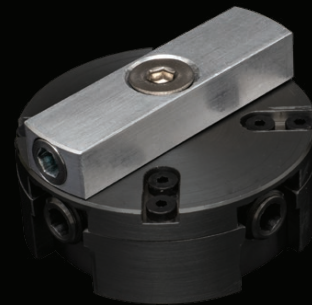




## Shellac Plate

502-082

Secure your work using shellac and take advantage of the benefits of using the 3X System.



## Aluminum Adapter Block

500-545

Turn any 3X workholding fixture into a tool that can be used in standard vise jaws. The Aluminum Adapter Block can be attached using the threads on the bottom of the 3X fixtures, allowing them to be clamped in any vise.



## Shellac Tubes

502-506

Shellac Tubes drop into the 3X Master clamps to hold small pieces such as earrings, pendants, or other items. The ability to use two shellac tubes at a time allows for greater efficiency. Available in four sizes to save time heating.

*(1) 39 mm tube, (2) 20 mm tubes, (2) 15 mm tubes, (2) 11 mm tubes*



## Replacement Orbital

500-546

Avoid time spent switching the Orbital Balls from one fixture to another by adding these replacement balls to fixtures you use regularly in the Orbital Jaws.

## Jura Stackable Vise Bases



523-032

Set of three bases are designed to keep work at a consistent height, depending on which Jura fixture you are using. They are stackable and sturdy. This set of 3 stackable bases is included with the 3X Starter Set.

*Also Sold Individually:*



**Small**

523-017



**Medium**

523-018



**Large**

523-019

## Digital Divider

523-021



This compact-style digital divider is great for precision layout. The hardened steel jaws can be sharpened to your desired points.

## 5 mm Hex Key

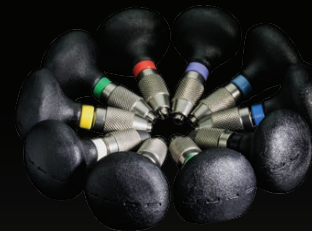
523-020



This large handle 5 mm hex key is great for getting extra leverage when tightening down your vise jaws.

## Hand Chucks

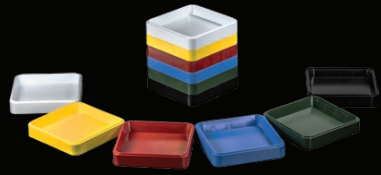
500-521



**Round & Stub Head** *Set of 10*

The Jura hand chucks are great for use with beading tools, bead splitters, burnishing tools, and more. The half-round handles provide a great reference point when using beading tools. The round handles are ideal for burnishing and bead splitting.





**Colored Stone Trays**

500-522

A set of six colored trays are perfect for separating different stone sizes and staying organized. They are stackable for space savings and designed to easily access your stones.



**Stone Organizer**

502-514

Keep your stones organized and in one place. Forty smaller square boxes allow you to create your own organization system within a larger box.

**Micromotor Handpiece Stand**

500-525

Keeping your micromotor within reach and off the bench top makes the holder a great addition to your bench.



**Ceramic Scribe & Carbide Pick**

523-005

This set of tools is great for doing layout and positioning stones. The ceramic scribe doesn't catch on metal like traditional scribes. The carbide pick can have many uses such as moving or adjusting stones.

*Also Sold Individually:*

**Ceramic Scribe**

523-006

**Carbide Pick**

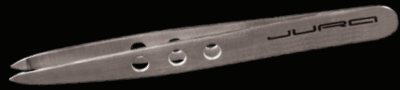
523-004



**Small Goods Organizer**

523-011

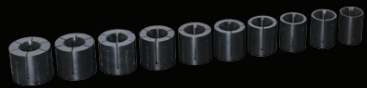
A great option to keep your tweezers, hex key, scribe, and pick within reach.



**Tweezers**

523-001

An ideal solution for picking up stones, drills, burs, or other items.



**Plastic Collets**

500-504

Replacement set of plastic collets. Fits Jura QC and 3X systems. This set of 10 collets is for rings sized 13–22 mm.



**Brass Collets**

502-504

This set of 11 brass collets is perfect for use with Jura QC ring fixtures. Durable construction will withstand hammering. It also includes a radius divider for quick and easy layout. This fixture is compatible with the Jura by GRS Classic QC Workholding System and the 3X Line.

**Ceramic Polishing Stones  
Round 2.35 mm**

For use in micromotor handpiece when polishing and finishing. Available in three grits.



**Red/Fine  
1200 Grit**

602-422

**Orange/  
Rough  
250 Grit**

602-426

**Blue/  
Medium  
800 Grit**

602-424



**C-Max**

**Round Blank, 2.35 mm**

022-393

Industry-leading carbide gravers.

*Length: 45 mm. Use with Jura QC 2.35mm*

MORE PRODUCTS AVAILABLE ONLINE  
**GRSEUROPE.COM**

WORKHOLDING SOLUTIONS FROM THE MIND OF

JURCO



GRS<sup>®</sup>

tools in Europe

*The official European website about professional tools for stone setters,  
engravers and jewellers. For all your tools, training and support!*

grseurope.com  
info@grseurope.com